

Pg. 312; # 9-13 odd
 17-21 odd
 24-27 odd
 40, 41

GEOMETRY (SECTION 5.4)

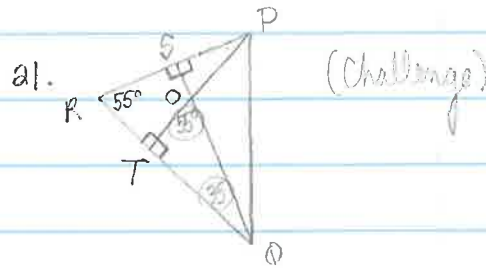
9. $z1 = 4.5$, $z2 = 13.5$

11. Median, it is from a vertex and bisects the opposite side of the Δ .

13. Altitude, it is from a vertex and is perpendicular to the opposite side of the Δ .

17. Point H

19. Point d



24. Median $\Delta ABC = \overline{AE}$

25. Altitude $\Delta AEC = \overline{ED}$

26. Median $\Delta BOC = \overline{DE}$

27. Altitude $\Delta AOC = \overline{OD}$

$180 - 90 - 55 = 35^\circ$

$180 - 90 - 35 = 55^\circ$

$180 - 55 = \boxed{m\angle FOQ = 125^\circ}$

40. $KR = 8$ (B)

41. $CP = 24$ (H)